

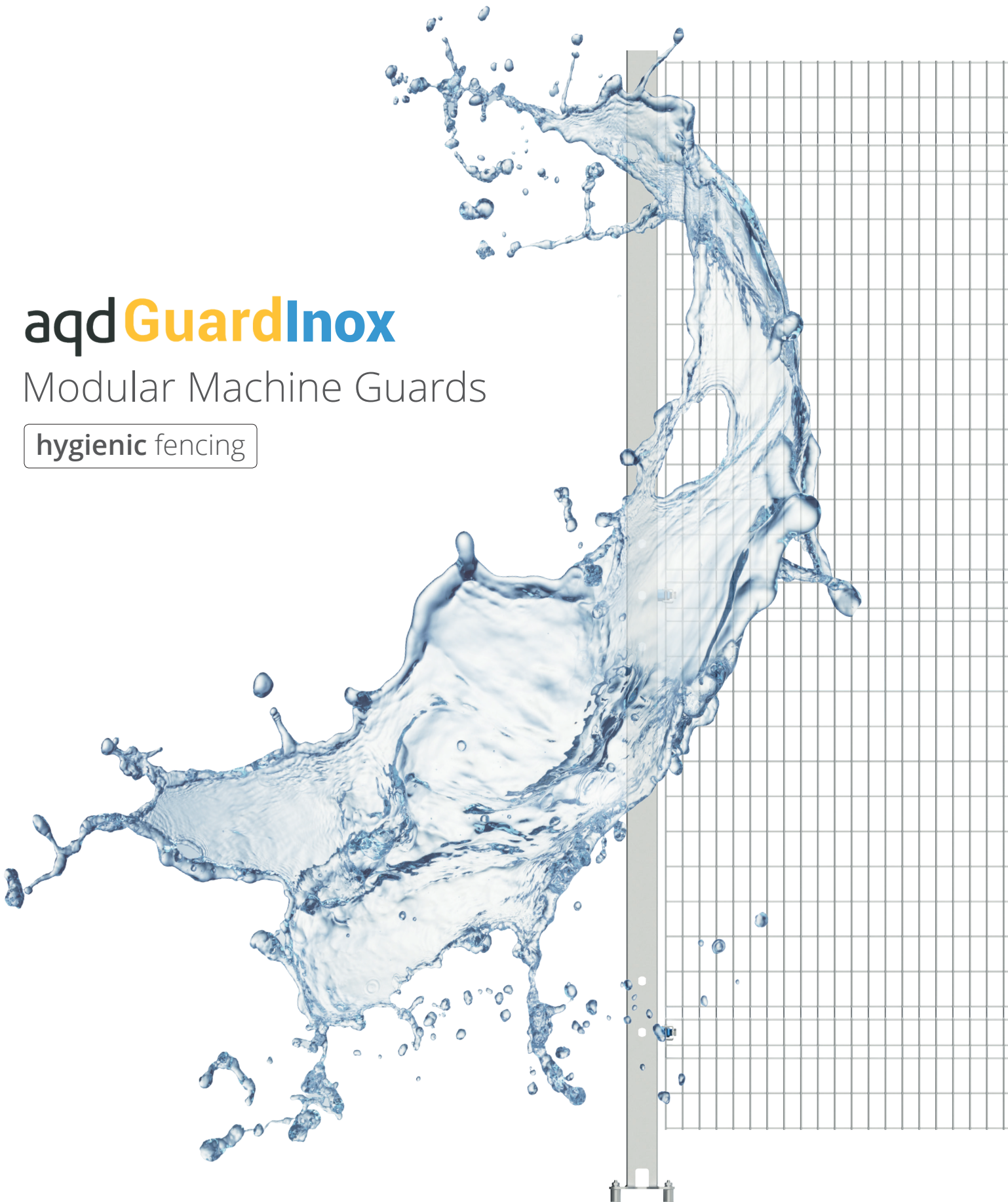
aqdGuard >>

Safety on Productivity

aqdGuardInox

Modular Machine Guards

hygienic fencing



GuardInox

Modular Machine Guards

hygienic fencing

Maximum safety and hygiene.

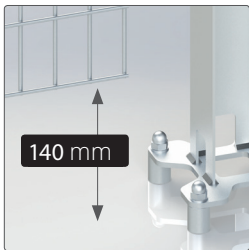
GuardInox combines safety, flexibility and compliance with the high hygiene standards required by the agro-food, chemical and pharmaceutical markets.

The **4 mm** welded wire panel is frameless, and strengthened by transverse folds. It is made of **AISI 304** stainless steel, which is finished by passivation. The panel is fixed to **inspectable U-shaped posts** by means of high-resistant **fast captive connections** made of techno-polymer and stainless steel.

GuardInox is quick to assemble: a single **universal post** for linear, angular and door mounting reduces setup time. Wide ribs facilitate the use of power tools, while the frameless construction allows panel sizes to be **adjusted** quickly on site.

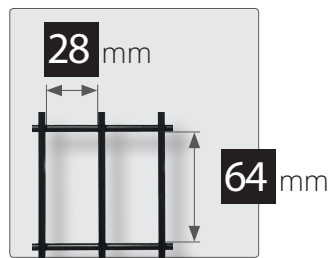
Safety

EN ISO 13857



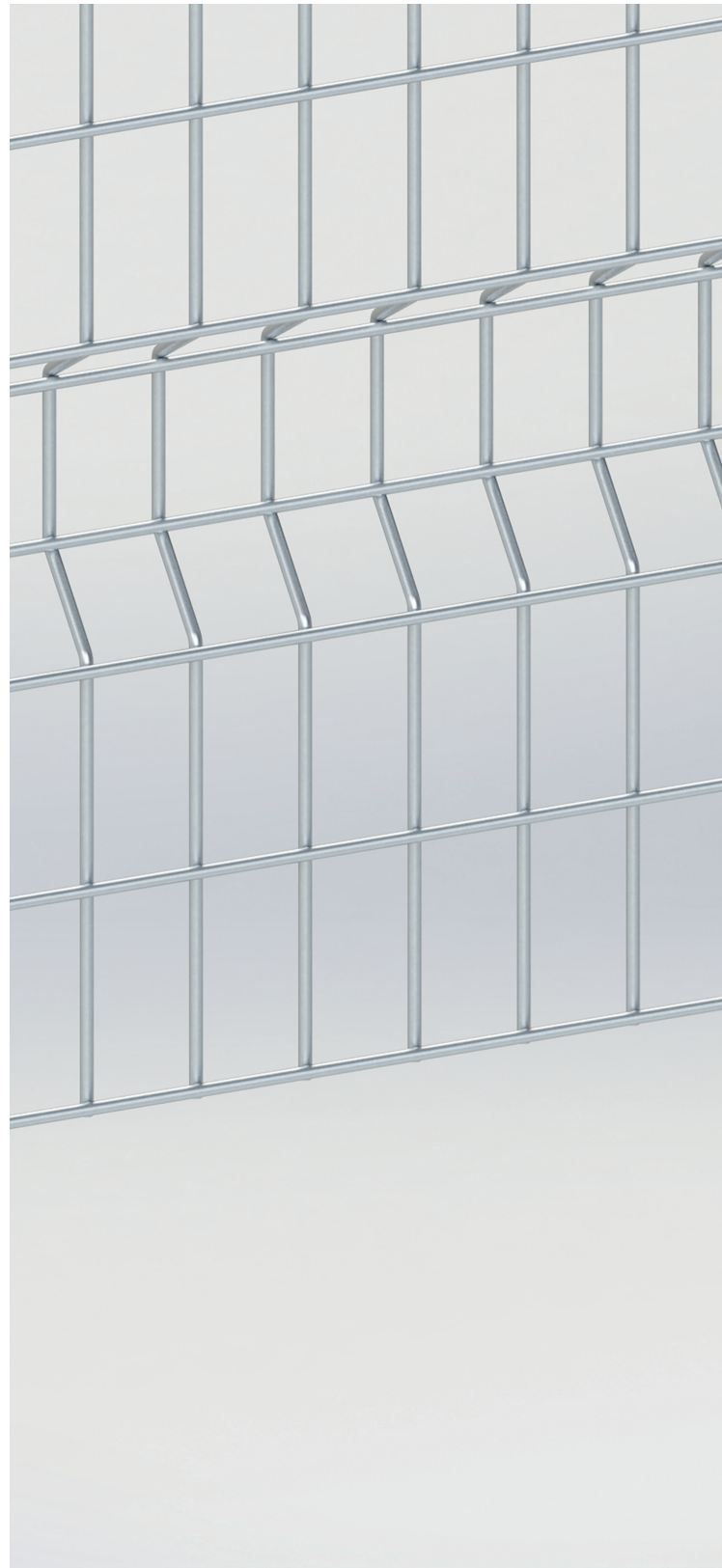
140 mm ground clearance

EN ISO 13857-4.3



28 x 64 mm slot opening allows to install the fence 200 mm from danger zone

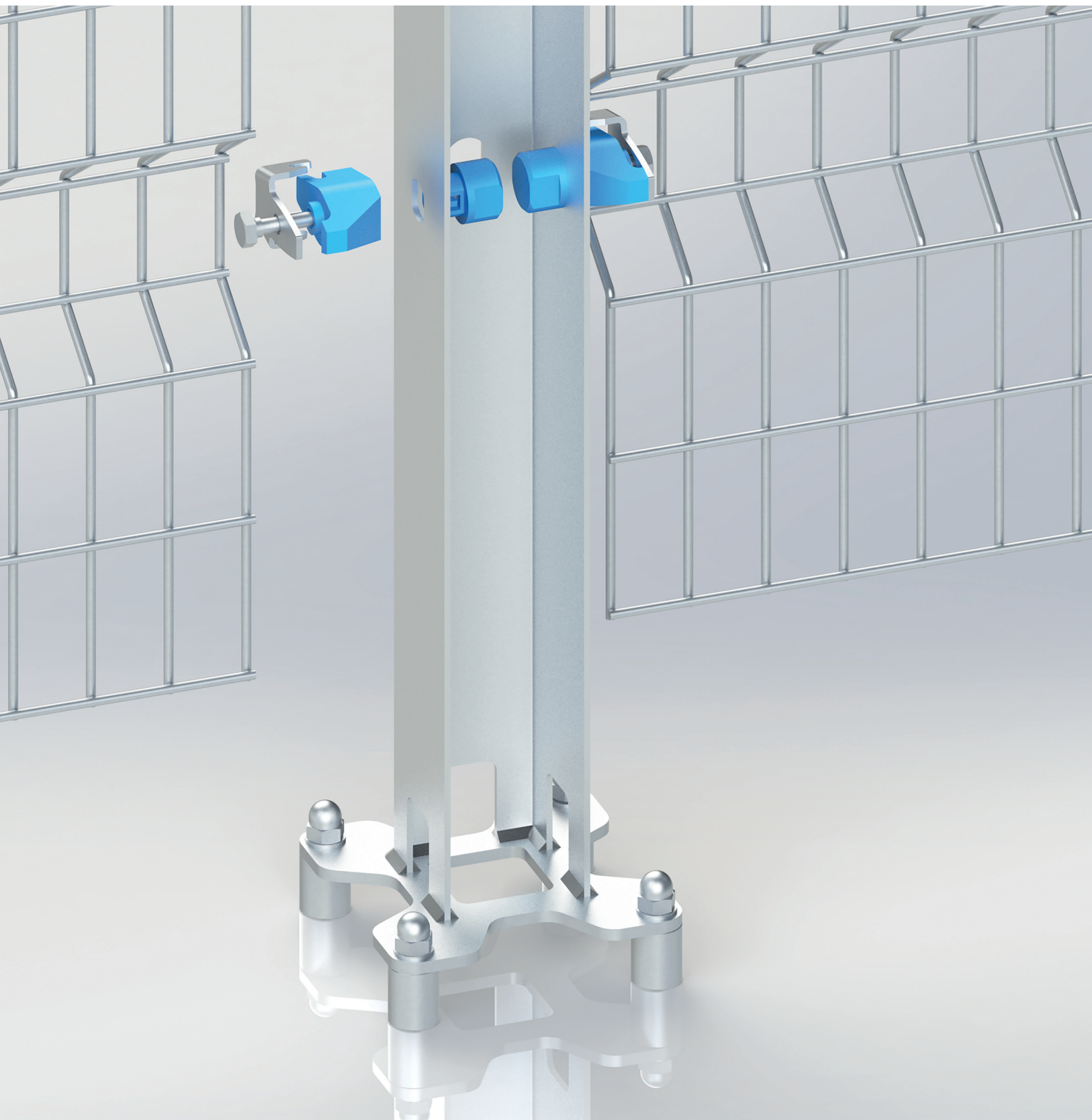
EN ISO 13857-4.2



Robust

- ✓ Stainless Steel AISI 304 and techno-polymer
- ✓ 4 mm welded wire with reinforcement ribs
- ✓ Resistant to high-pressure water jets

aqdGuard >>>



Practical

- ✓ Reduced number of components
- ✓ Captive quick fasteners
- ✓ Frameless, easily adjustable on-site

Hygienic

- ✓ Durable
- ✓ Easy maintainable
- ✓ **ECOLAB**® Tested and Certified

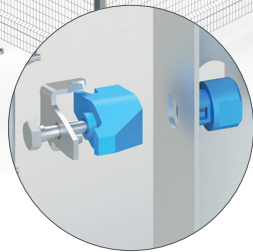
GuardInox

Modular Machine Guards **hygienic fencing**

Robust



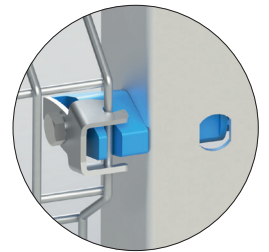
GuardInox fast and efficient installation is achieved by simple, easy-to-use connectors which fit securely to the posts, while the layout can be easily configured to fit the machinery and available space



Passivated **AISI 304 Stainless Steel** and techno-polymer to ensure great resistance to high-pressure water jets

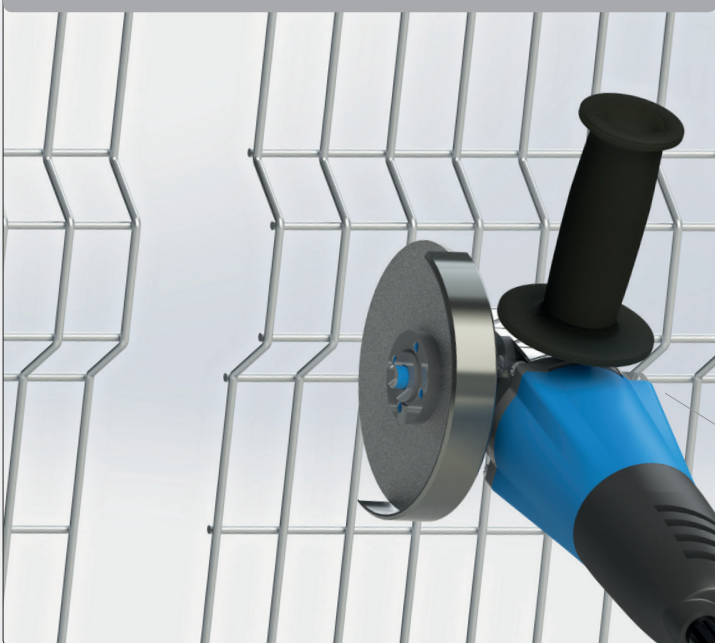


Wire – **4 mm** drawn steel, high tensile strength mesh, with reinforcement ribs



Greater stability is achieved by connecting the panels to the posts at the position of the reinforcement ribs

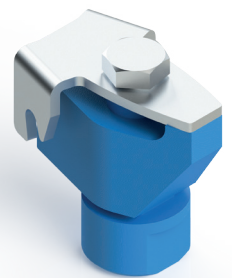
Practical



FULLY ADAPTABLE

Frameless construction allows panel sizes to be adjusted quickly on-site

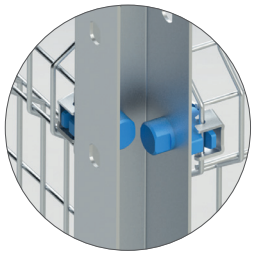
Captive Retained fastenings



2-components pres-assembled quick **Captive Retained** fasteners

EN ISO 14120
and **2006/42/EC**

Hygienic Design Modular Guard - in 4 steps



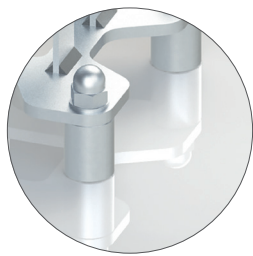
1 REDUCED CONTACT SURFACES

minimized metal-to-metal contact



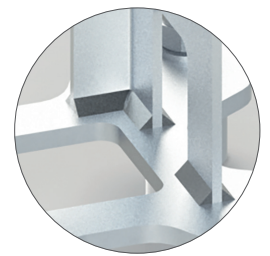
2 OPEN DESIGN

allows for full cleaning inspection and prevents the accumulation of dust and residue



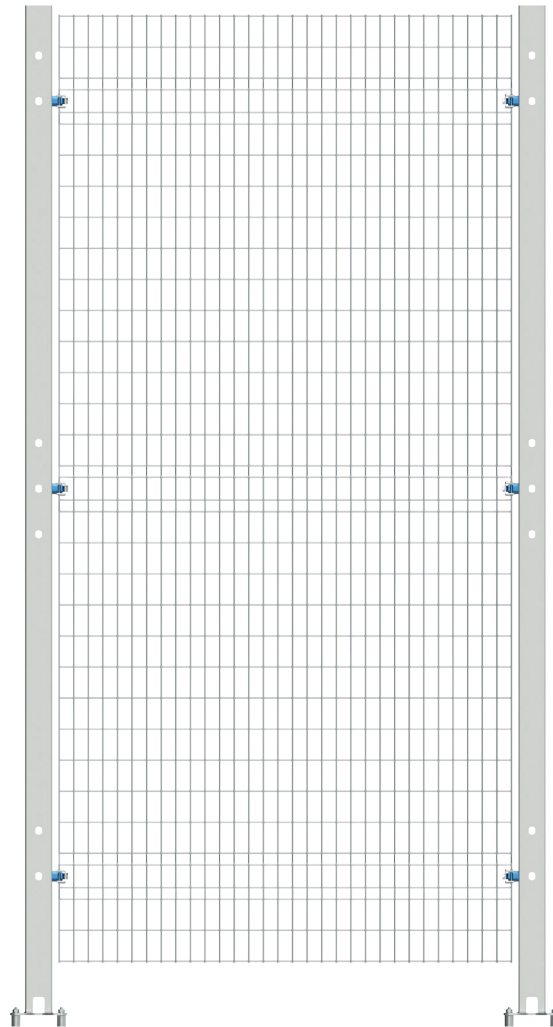
3 INCLINED SURFACES and SPACERS

to avoid liquids pooling and ease cleaning of surrounding areas



4 TIG WELDING

maximum cavity reduction to ensure complete sealing of each joint



Durable

- ✓ Resistant to high-pressure water jets
- ✓ Resistant to corrosion

Easily maintainable

- ✓ Fully inspectable
- ✓ Prevents accumulation of dirt
- ✓ Allows cleaning of surrounding areas

Safe

- ✓ **ECOLAB**® Tested and Certified

Detergent and disinfectant resistance tests for 2000 washing cycles (6 years of use) on:

- TOPAZ AC5
- P3-TOPAX 990
- TOPACTIVE DES
- P3-TOPAX 66
- TOPAZ HD3
- TOPAZ MD3



Regulation Compliance

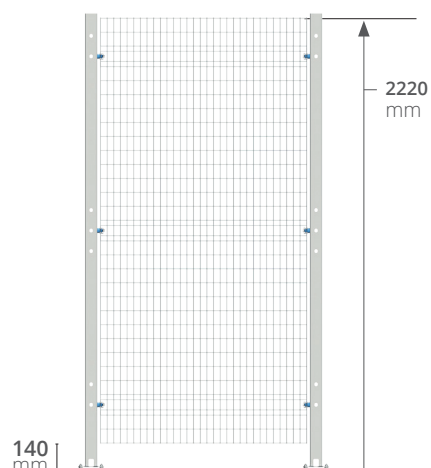
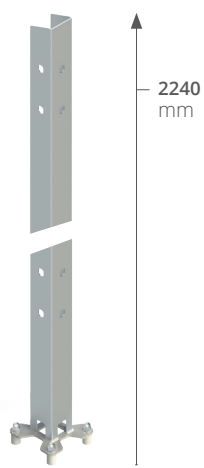
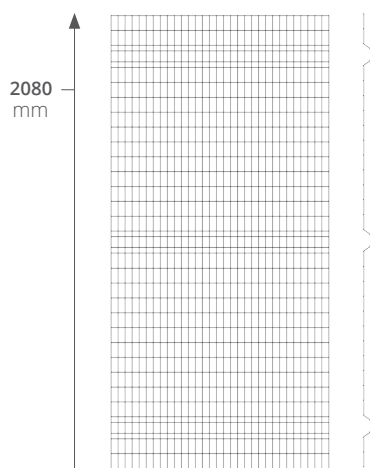
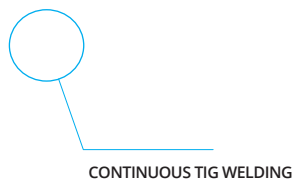
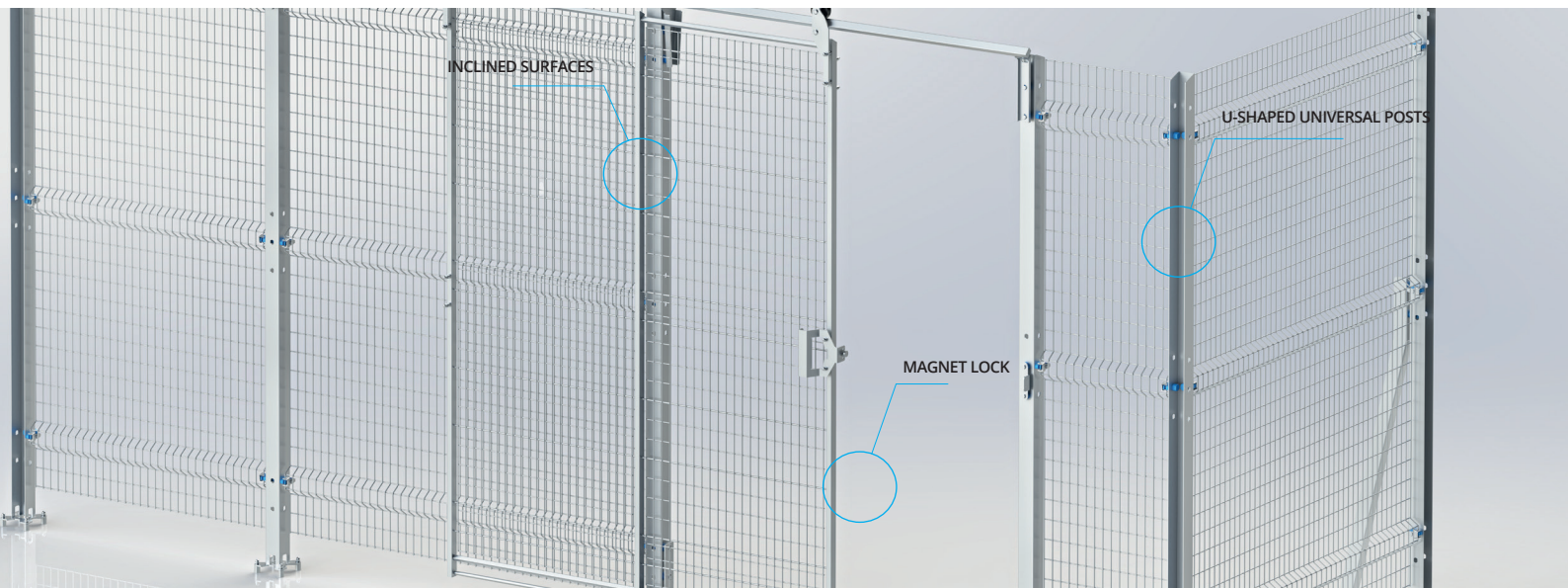
GuardInox is constructed in compliance with the following EUROPEAN and INTERNATIONAL STANDARDS: EN ISO 14120; EN ISO 12100; EN ISO 13857; EN ISO 10218-2; 2006/42/2/EC Machinery Directive; EN 1672-2; EN ISO 14159

GuardInox hygienic fencing

Technical Specifications

POST
mm
60

WIRE Ø
mm
4



Panels

Mesh: 32 x 68 x 4 mm
Height: 2080 mm
Bases: 484, 992, 1472, 1988 mm

Posts

Universal (for linear, corner or end mount) draining 60 x 60 mm U-shaped
Baseplate: continuous TIG welded with 4 anchoring points
Height: 2240 mm

Overall protection height: **2220 mm**

Materials - Panels and Posts:
Passivated high quality Stainless STEEL AISI 304
Materials - Technopolymer:
Food contact DOMAMID® 6G30FC



Door solutions

SINGLE HINGED DOOR

Opening 1000 mm



SIMPLE, SAFE AND SOLID

- ✓ Framed panel with central reinforcements
- ✓ 20 x 30 mm upper bar
- ✓ 4 + 6 mm welded wire flat mesh
- ✓ 180° swing
- ✓ One panel for both Left and Right opening
- ✓ Hygienic design with inclined surfaces
- ✓ Supplied with Magnet Lock as standard

SINGLE UPPER GUIDE SLIDING DOOR

Opening 1500 mm



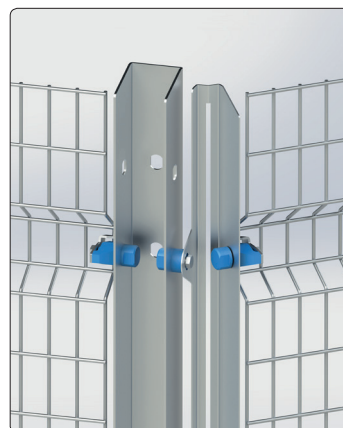
LARGER OPENING, GREAT STABILITY

- ✓ Framed panel with central reinforcements
- ✓ 20 x 30 mm upper bar
- ✓ 4 + 6 mm welded wire flat mesh
- ✓ One panel for both Left and Right opening
- ✓ Hygienic design with inclined surfaces
- ✓ Low friction upper trolley
- ✓ Reversed lower slider to avoid dirt accumulation
- ✓ Supplied with Magnet Lock as standard

Accessories

GuardInox system can be completed with the following accessories:

- Wind Bracing
- Variable angle kit
- Safety switch brackets



SERVICIOS INTEGRALES PARA LA SEGURIDAD INDUSTRIAL

Años de experiencia en la certificación, homologación y adecuación de máquinas y líneas de producción nos permiten ofrecer una amplia gama de servicios y dispositivos orientados a la seguridad industrial.

- **AQD Industrial Product** distribuye los mejores productos dedicados a la seguridad industrial: enclavamientos, mandos y pedales de seguridad, sensores electrónicos, barreras optoelectrónicas, relés y plcs, bloqueos de resguardos, protecciones para máquina-herramienta, guardacuerpos, barandillas...

Consulte todos nuestros artículos en www.industrialproduct.es.

- **AQD Consultoría e Ingeniería** asesora tanto en el cumplimiento de las directivas y normativas vigentes, como en la solución más eficiente en seguridad industrial.

Somos expertos en certificación RD1215/97, Marcado CE de máquinas y líneas de proceso, validaciones en Seguridad Funcional según EN13849-1, medición de tiempos de respuesta y distancia según EN13855, directivas, PRL, Atex, accesos a zonas peligrosas y procesos industriales, entre otros.

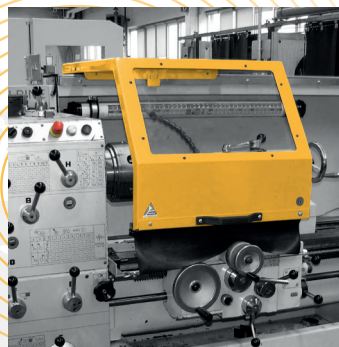
- **AQD Servicio Técnico** realiza los montajes mecánicos y eléctricos de nuestros productos y proyectos con personal propio.



VALLADO



BARRERAS



PROTECCIONES



INGENIERÍA



DISPOSITIVOS



AQD - Oficinas centrales

Calle Alba, 1 – Local 2-3
08520, Les Franquesses del Vallès
Barcelona - España
Tel.: +34 902 88 25 60

www.aqdindustrial.es
info@aqdindustrial.es

www.industrialproduct.es
info@industrialproduct.es

